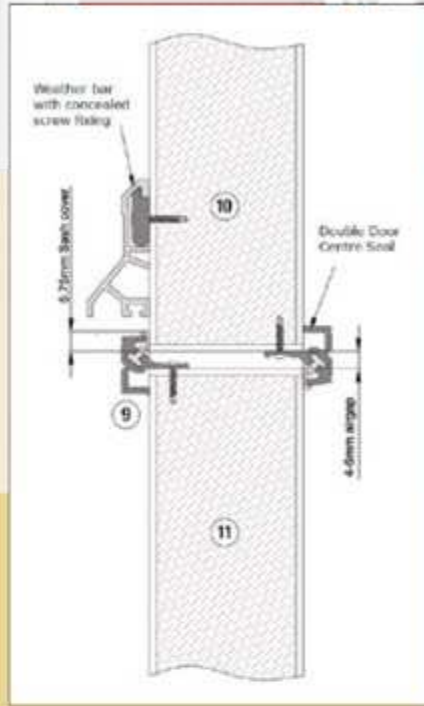


THE  
*Stable Door*

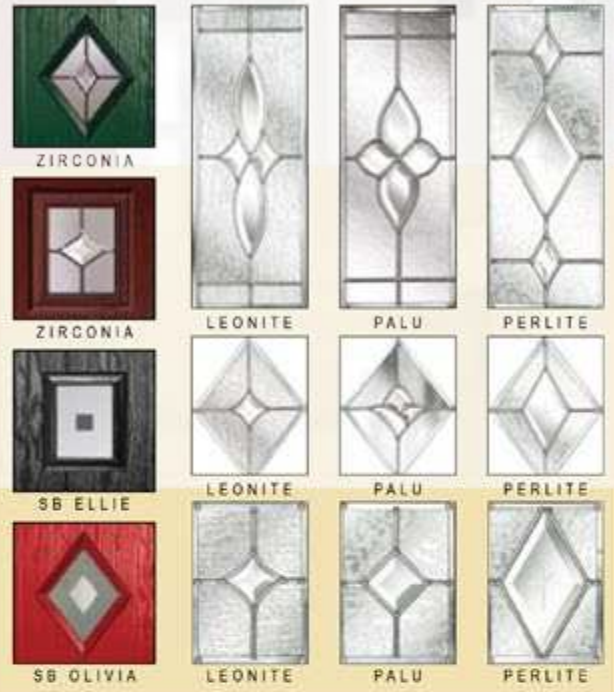
44mm COMPOSITE STABLE DOOR



# The 44mm COMPOSITE STABLE DOOR



## Choice of Decorative Glass



## STABLE DOOR SPECIFICATION

- Lock Type:** Winkhaus 45mm Backset
- Edge Finish:** Edgebanded (3 Sides)
- Handle Type:** Mila Spartan (White, Gold or Chrome)
- Hinge Type:** Laird Challenger (Qty 4) White Only

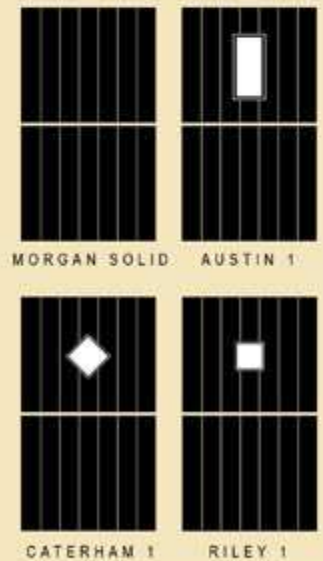
## STABLE KITS

Pair escutcheons, one thumb turn for rack bolt.  
Available in White, Gold and Chrome.

**NOTE:** Stain/White & Stain/Stain Doors Gold Kit Only



## STYLES



Due to printing limitations the colours shown may not be an exact match to the actual door, samples of colour can be provided on request. Hallmark Panels Limited reserve the right to withdraw or replace any of the products shown without prior notice.



Hallmark Panels Limited

Valletta House | Valletta Street | Hedon Road | Hull HU9 5NP

Telephone +44 (0)1482 703222 | Fax +44 (0)1482 701185

[www.hallmarkpanels.com](http://www.hallmarkpanels.com)